

POLITICAL TRUST IN CONTEMPORARY REPRESENTATIVE DEMOCRACIES

Barcelona
24th-25th of November 2016

About the event

The World Association of Public Opinion Research (WAPOR) in collaboration with the Research and Expertise Center in Survey Methodology (RECSM) and the Universitat Pompeu Fabra hold a regional conference on November 24th-25th of 2016 in Barcelona, Spain. The theme of the conference is Political Trust in Contemporary Representative Democracies.

Democratic representation seems to be in a crisis, at least from the citizen perspective. This is most notoriously observed in the low and still decreasing levels of political trust in the main institutions of democratic representation (parliaments, governments), social and political institutions of aggregation of interest (political parties and unions), and even international and supranational political and economic institutions. Citizens seem to be more and more critical towards these institutions essential for the political, economic and social order of contemporary representative democracies. This is a particularly notable problem in today's world, given the already visible consequences. Citizen distrust can lead to significant threats to representative democracy such as political populism, increased levels of political protest and decreased levels of citizens involvement in electoral politics, the emergence of radical, non-systemic parties, and even increased political violence.

This topic has enjoyed considerable research attention, but the extant literature on political trust suffers from several problems. First, most of the studies are centered in a limited number of the world's regions, mostly in Western postindustrial societies and more concretely in Europe and the United States, creating a case-selection bias in the literature that limits the generalizability of its findings. Second, the existing data are also fragmented and incomplete, especially aggregate data, limiting our ability to notice trends both over time and cross-nationally. Third, data analyses are not properly done or are based on a reduced number of case studies (countries), diminishing the statistical efficiency of the estimators at the aggregate level. Finally, most of the evidence on political trust is based on cross-sectional surveys (national and comparative) using the traditional institutional trust scale.

The aim of this congress will be to facilitate better research on the topic by increasing scholarly discourse on political trust and by calling for interregional comparative studies with individual or aggregate data on political trust, or for case or cases studies based on innovative measures of political trust and for using innovative survey designs or survey experiments. Papers based on big data from internet and social media sources will be also welcome.

Schedule

24th of November

8.30 - 9.00 am	Registration
9.00 - 9.30 am	Opening session (Room 40.035)
9.30 - 11.00 am	Panels Panel 1. Trust and the economy (Room 40.035) Panel 2. Trust in institutions around the globe (Room 40.S16)
11.00 - 11.30 pm	Coffee break (Patio)
11.30 am - 1.00 pm	Panels Panel 3. Methodological aspects (Room 40.S16) Panel 4. Trust and the winner-loser gap (Room 40.035)
1.00 - 2.30 pm	Lunch
2.30 - 4.00 pm	Panels Panel 5. Social media, online activism and political participation (Room 40.035) Panel 6. Trust in and support for politicians (Room 40.S16)
4.00 - 4.30 pm	Coffee break (Patio)
4.30 - 6.00 pm	Panels Panel 7. Trust in the media, trust and the media (Room 40.S16) Panel 8. Political Trust in Perspective: National and International Comparisons (Room 40.035)

Schedule

25th of November

8.30 - 9.00 am	Registration
9.30 - 11.00 am	Panels Panel 9. Determinants of trust (Room 40.035) Panel 10. Political trust: measurement considerations (Room 40.S16)
11.00 - 11.30 pm	Coffee break (Patio)
11.30 am - 1.00 pm	Panels Panel 11. Electoral consequences of political trust and support (Room 40.S16)
1.00 - 2.30 pm	Lunch (Cafeteria)
2.30 - 4.00 pm	Panels Panel 12. Political trust and the public and nits consequences (Room 40.035)

24/11/2016 // 9:30 - 11:00 am

Panel 1 (Room 40.035)

Trust and the economy

Chair and discussant: Lissanne de Blok and Tom van der Meer

- Institutional and Interpersonal Trust in Times of Crisis, the Case of Greece 2002-2011

Heikki Ervasti (University of Turku), Takis Venetoklis (University of Turku), Antti-Jussi Kouvo (University of Eastern Finland)

- The Buffer of Support: Do Young Generations Resist the Crises?

Mónica Ferrín (Universidad de Zurich & Collegio Carlo Alberto)

- The Effects of Economic and Democratic Performance on Satisfaction with Democracy – A Comparative Panel Study

Pablo Christmann (RECSM, UPF)

- When Will People Pay to Pollute? Environmental Taxes, Political Trust, and Experimental Evidence from Britain

Malcolm Fairbrother (University of Bristol)

Panel 2 (Room 40.S16)

Trust in institutions around the globe

Chair and discussant: Carol Galais

- Trust in institutions in the Arab-Mediterranean Youth

Teresa Queralt (Universitat Pompeu Fabra), Wiebke Weber (Universitat Pompeu Fabra)

- Does Corruption Matter? Impact of 2013 Corruption Scandal on Political Trust in Turkey.

Tuba Bircan (HIVA - Research Institute for Work and Society, University of Leuven)

- Is institutional confidence in Canada declining? A longitudinal analysis

Isabelle Valois (Université de Montréal)

24/11/2016 // 11:30am - 1:00 pm

Panel 3 (Room 40.S16)

Methodological aspects

Chair and discussant: Tamar Ashuri

- **Question-order effects and trust in politicians in plurinational contexts**
Raul Tormos (CEO, Barcelona)
- **Trust in Government. Towards a theoretically informed measurement model**
Christopher Starke (Münster University), Frank Marcinkowski (Münster University)
- **Explaining political trust after correction for measurement error**
Wiebke Weber (RECSM, UPF), Willem Saris (RECSM, UPF)
- **An analysis of the polls of Venezuela's 2012 Presidential Elections: Multiply imputing electoral preference from non-disclosers**
Carlos Lagorio (University of Essex, Institute for Social and Economic Research (ISER))

Panel 4 (Room 40.035)

Trust and the winner-loser gap

Chair and discussant: Josef Seethaler

- **Political trust and support in diverse democracies**
Anaïd Flesken (University of Bristol), Jakob Hartl (University of Bristol)
- **Does economic and political performance bridge the winner-loser gap in political support? A cross-national and longitudinal analysis of thirty European countries between 2002 and 2015**
Sergio Martini (Universitat Pompeu Fabra), Mario Quaranta (LUISS University)
- **Models of democratic institutions and citizens' attachment to democracy**
Irene Palacios Brihuega (European University Institute)
- **The Winner Takes It All: The Effect of Direct Democracy on Citizens' Satisfaction and Political Trust Revisited: Exploring the Causal Mechanism.**
Sofie Marien (University of Leuven, University of Amsterdam), Anna Kern (University of Leuven)

24/11/2016 // 2:30 - 4:00 pm

Panel 5 (Room 40.035)

Social media, online activism and political participation

Chair and discussant: Sofie Marien

- **What Signals Are You Sending? Politicians' usage of online media for the constructions of self-image**
Tamar Ashuri (Tel-Aviv University)
- **The slacktivism crossroad: empowerment or disaffection?**
Carolina Galais (Universitat Oberta de Catalunya), Eva Anduiza (Universitat Autònoma de Barcelona)
- **Citizen Participation, Social Media Use, and the Shift in Political Trust: Results from a European Survey**
Maren Beaufort (Austrian Academy of Sciences), Josef Seethaler (Austrian Academy of Sciences)

Panel 6 (Room 40.S16)

Trust and the winner-loser gap

Chair and discussant: Remko Voogd

- **Facts are for losers. The effect of exposed dishonesty on trust in politicians during the US presidential campaign 2016**
Hannah Werner (Centre for Political Research, University of Leuven; AISSR, University of Amsterdam)
- **Distrusting politicians, supporting alternative decision-making processes**
Pau Alarcón (UPF, UB), José Luis Fernández (IESA-CSIC) and Joan Font (IESA-CSIC)
- **The Impact of Emotional and Personal Values on Support for Donald Trump. A Segmentation Approach.**
Carlos Elordi, (Director of Advanced Analytics)
- **The Corrosive Effect of Corruption on Trust in Politicians: Evidence From a Natural Experiment.**
Macarena Ares (European University Institute), Enrique Hernández (European University Institute)

24/11/2016 // 4:30 - 6:00 pm

Panel 7 (Room 40.S16)

Trust in the media, trust and the media

Chair and discussant: Alexander Bor

- **Which frames for political trust? Politainment and the creation of Trust in Politics and Politicians**
Eva Pujadas (Universitat Pompeu Fabra)
- **The journalist as missing link? Journalists' perspective on trust in political institutions**
Nina Steindl (LMU Munich)
- **Do you trust your watchdog? The Challenges of Measuring Trust in the News Media**
Trevor Thompson (Associated Press-NORC Center for Public Affairs Research, University of Chicago), Jennifer Benz (NORC, University of Chicago), David Sterrett (NORC, University of Chicago), Tom Rosenstiel (The American Press Institute), Jeff Sonderman (The American Press Institute), Kevin Loker (The American Press Institute)
- **Democracy or coup? Twitter narrative disputes in Brazil**
Ariadne Santiago (University of Brasilia), Tayrine dos S. Dias (University of Brasilia) and Marisa von Bülow (University of Brasilia)

Panel 8 (Room 40.035)

Political Trust in Perspective: National and International Comparisons

Chair: Frederick C. Turner (University of Connecticut)

- **Fractured trust hollowed spirit and changing times erode worldwide belief in democracy: analysis based on global polling data.**
Ijaz Shafi Gilani and Umer Gilani
- **Trust and Cultural Change in Argentina and Latin America**
Marita Carballo (Voices Research and Consultancy, Argentina)
- **The effect of context-level volatility on specific and diffuse political trust in Western Democracies: A multi-level study.**
Remko Voogd (University of Amsterdam)
- **The effects of regional attachment on ideological self-placement: A comparative approach**
Carol Galais (UOC, Barcelona), Ivan Serrano (UOC)

Panel 9 (Room 40.035)

Determinants of trust

Chair and discussant: Malcom Fairbrother

- **Why do(n't) we trust in Government? An empirical Investigation of four different Trust Reasons**
Frank Marcinkowski (Münster University), Christopher Starke (Münster University)
- **Trust in the European Union. The Moderating Effect of the Information Environment**
Anna Brosius (University of Amsterdam), Claes de Vreese (University of Amsterdam), Erika van Elsas (University of Amsterdam), Andreas Goldberg (University of Geneva), Franziska Marquart (University of Vienna)
- **Are Citizens Becoming more "Critical"? A Comparative Analysis of Politics trust across time in Europe and Latin America**
Mariano Torcal (Universitat Pompeu Fabra) and Matias Bargsted (P. Universidad Católica de Chile)
- **Confidence in Judicial Institutions in Europe**
Michele Sapignoli (University of Bologna)
- **Blame where it is due? - The impact of responsibility perceptions on the link between performance evaluation and political support**
Lisanne de Blok (University of Amsterdam), T.W.G. (Tom) van der Meer (University of Amsterdam), Wouter van der Brug (University of Amsterdam)

Panel 10 (Room 40.S16)

Political trust: measurement considerations

Chair and discussant: Anaïd Flesken

- **Assessing Political Trust Measurement Equivalence: A longitudinal European analysis**
Diana Zavala-Rojas (RECSM, UPF), André Pirralha (RECSM, UPF)
- **Beyond Institutional Confidence: Measuring Trust across Political, Social, and Economic Life in America**
Trevor Thompson (Associated Press-NORC Center for Public Affairs Research, University of Chicago), Jennifer Benz (NORC, University of Chicago), Dan Malato (NORC, University of Chicago)
- **Political trust as a variable or as a process? - A methodological question**
Wolfgang Knorn (Leopold-Franzens-University Innsbruck)

Panel 11 (Room 40.S16)

Electoral consequences of political trust and support

Chair and discussant: Peter Esaiasson

- **Inside-out or outside-in? Turnout and the interplay between the duty to vote and social pressure**

André Blais (Université de Montréal), Carol Galais (UOC, Barcelona)

- **The untapped potential of young people in European Elections**

Chris Hanley (TNS opinion), Nicolas Becuwe (TNS)

- **Revisiting the Protest Voting Hypothesis: An Empirical Analysis At The EU Level**

Stefano Camatarri (Università degli Studi di Milano (University of Milan))

- **Explaining vote for populist anti-political establishment parties: the impact of the political trust, the economic and the political context**

Danilo Serani (Universitat Pompeu Fabra)

Panel 12 (Room 40.035)

Political trust and the public

Chair and discussant: Mariano Torcal

- **The Moment You Decide You Divide –How Citizens and Politicians Assess Procedural Fairness.**

Peter Esaiasson and Patrik Öhberg (University of Gothenburg)

- **Political rhetoric and conceptions of nationhood**

Anaïd Flesken (University of Bristol), Markus Hadler (Macquarie University, Sydney, Australia)

- **Are French dissatisfied democrats, critical citizens? Understanding the dimensionality of political trust and support for democracy in France**

Bruno Cautrès (CEVIPOF- Sciences Po)

- **Trustworthiness and Competence in Candidate Evaluations – Evidence from seven democracies**

Alexander Bor (Aarhus University), Lasse Laustsen (Aarhus University)

- **Decline and Alignment of Political Trust in light of Increasing Economic Inequality**

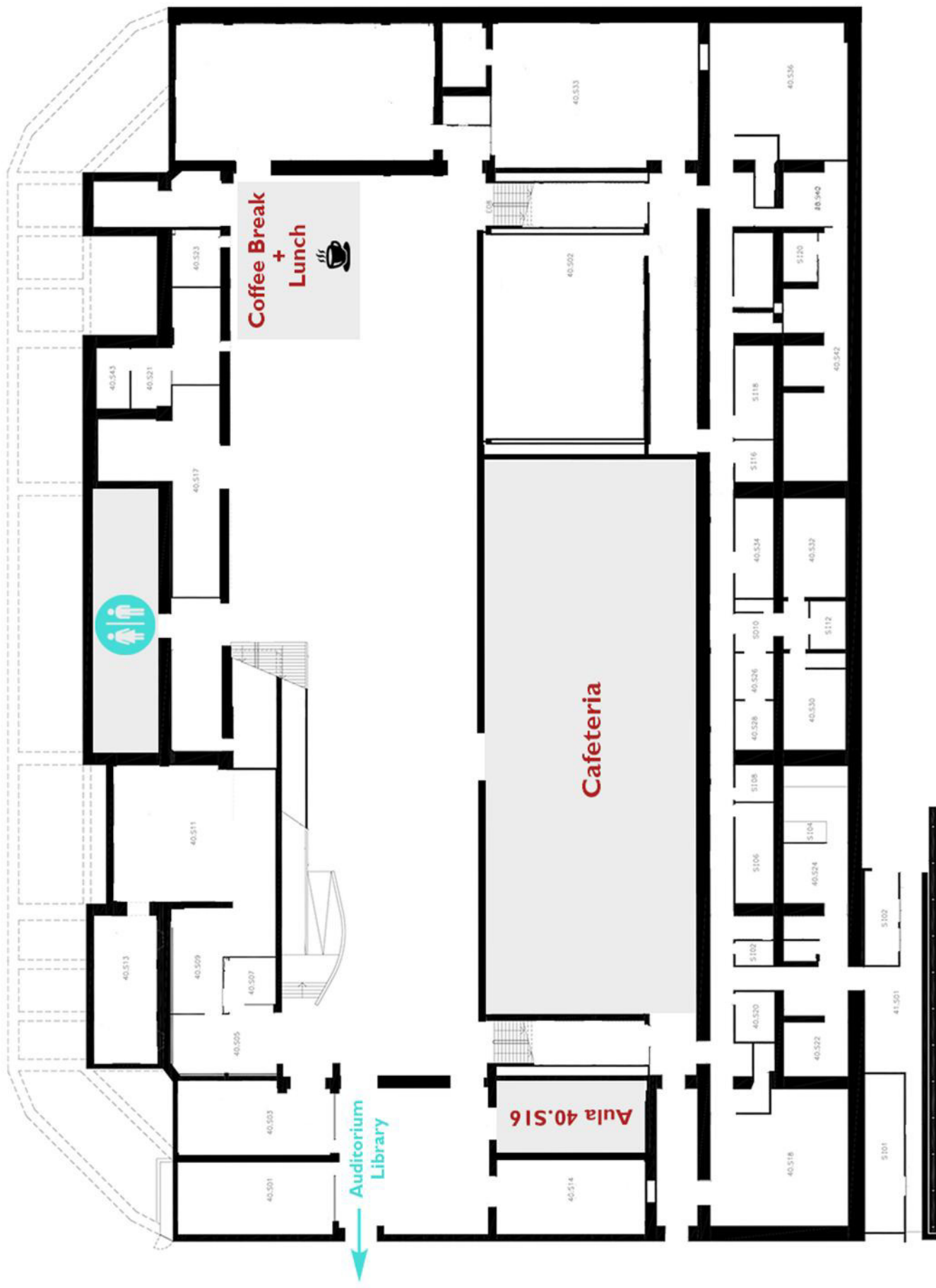
Matthias Fatke (LMU Munich), Daniela Braun (LMU Munich)

Roger de Lluria Building

The floor plan shows a large central area with a 'Welcome Coffe' area. To the left is a 'Registration Area' with a red dot indicating the registration point. To the right is a 'Sala de Graus' (40.035). The plan includes numerous numbered rooms (e.g., 40.006, 40.010, 40.012, 40.017, 40.019, 40.021, 40.023, 40.025, 40.027, 40.029, 40.033, 40.037, 40.039, 40.041, 40.043, 40.047A, 40.047B, 40.047C, 40.049, 40.051, 40.053, 40.055, 40.057, 40.059, 40.061, 40.063) and restrooms. A blue dashed line indicates the main circulation path, starting from the 'Entry' at the bottom, passing through the 'Registration Area', and ending at the 'Sala de Graus'. A red arrow points from the 'Registration Area' to the 'Welcome Coffe' area.

Roger de Lluria Building

● Underground Floor



Barcelona RECSM Summer School in Survey Methodology 2017

The Research and Expertise Centre for Survey Methodology (RECSM) of the Pompeu Fabra University (Barcelona, Spain) is happy to announce the fourth edition of the Barcelona RECSM Summer School, that has become one of the most recognized summer schools in **survey methodology and data analysis** in Europe and the world. Will be held from June 26th to July 7th 2017. All courses are held in English.

Courses offered at the Barcelona RECSM Summer School are directed to **academics and professionals** interested in the production and/or analysis of surveys.

The list of courses:

First week (26-30 June 2017)

- Implementing high-quality web surveys
- Social media research / Big data
- Correction for measurement errors
- Dealing with missing data in regression models
- Applied Bayesian modelling for social sciences
- Latent trait and latent class analysis for cross-national surveys

Second week (3-7 July 2017)

- Questionnaire designs
- Probability sampling methods
- Survey experiments
- Practical multilevel modelling with Stata
- Panel data modelling
- Analyzing comparative longitudinal survey data using multilevel models

Courses will be of 12 and 8 hours, during 3 and 2 days respectively. We will also offer complementary Stata and R courses.

Registration begins in January 2017. Deadline for registration is June 10th, 2017.

For more info and registration: recsm@upf.edu

